

CITY MULTI  
SYSTEM SCHEMATIC DWG.

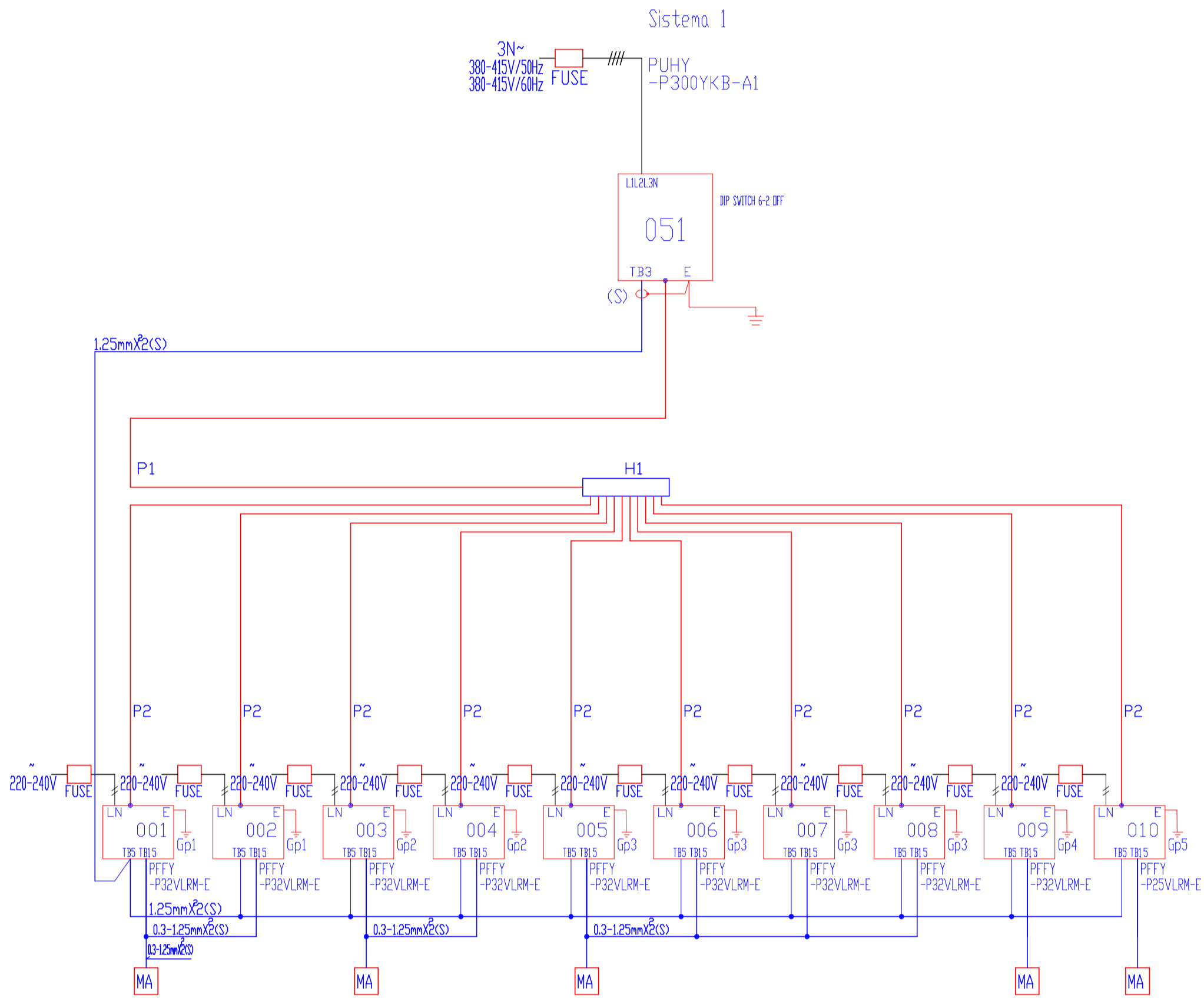
Appropriate Circuit Protection Device in accordance with legal government regulations are mandatory required such as (GFI/Inverter type) and WB etc. Please refer the amount of pre-charge and the formula of calculation which is mentioned on the data book.  
1.25mm (16 AWG) : 1.25mm (16 AWG) or more. 1.25mm (16 AWG) : 1.25mm (16 AWG) or more.

| DIAGRAM DISPLAY | SYMBOL | LEGEND DESCRIPTION |
|-----------------|--------|--------------------|
| -#-###          |        | POWER WIRE         |
| ---             |        | CONTROL WIRE       |
| ---             |        | REF. PIPE          |
| ---             |        | POWER SIGNAL WIRE  |

CONT.No PAGE 1 / 1

| PIPING LIST                      |                        |
|----------------------------------|------------------------|
| SYMBOL                           | BRANCH PIPE MODEL NAME |
| H1                               | CMY-Y1010-G            |
| SYMBOL LIQUID PIPE/GAS PIPE SIZE |                        |
| P1                               | 9.52 / 22.2            |
| P2                               | 6.35 / 12.7            |

Address Additional Refrigerant  
12.7mm for liquid pipe of P300 unit over 40m.



REMARKS

MITSUBISHI ELECTRIC CORPORATION  
PREPARED ON 2016/09/20

REV N°0

DESCRIZIONE:

BIBLIOTECA TOSCOLANO MADERNO  
SISTEMAZIONE IMPIANTO DI CLIMATIZZAZIONE

STUDIO MC2

di Luca Corini  
Via Monte Cengio, 5  
25128 - Brescia

Preliminare

Definitivo

Esecutivo

Data:

15/09/2016

COMMITTENTE:

Comune di Toscolano Maderno  
Via Trento, 5  
25088 Toscolano Maderno (BS)

TAVOLA: SCH\_01

Unifilare VRF

CTM01\_16

SCALA : 1/--

NOTE :