

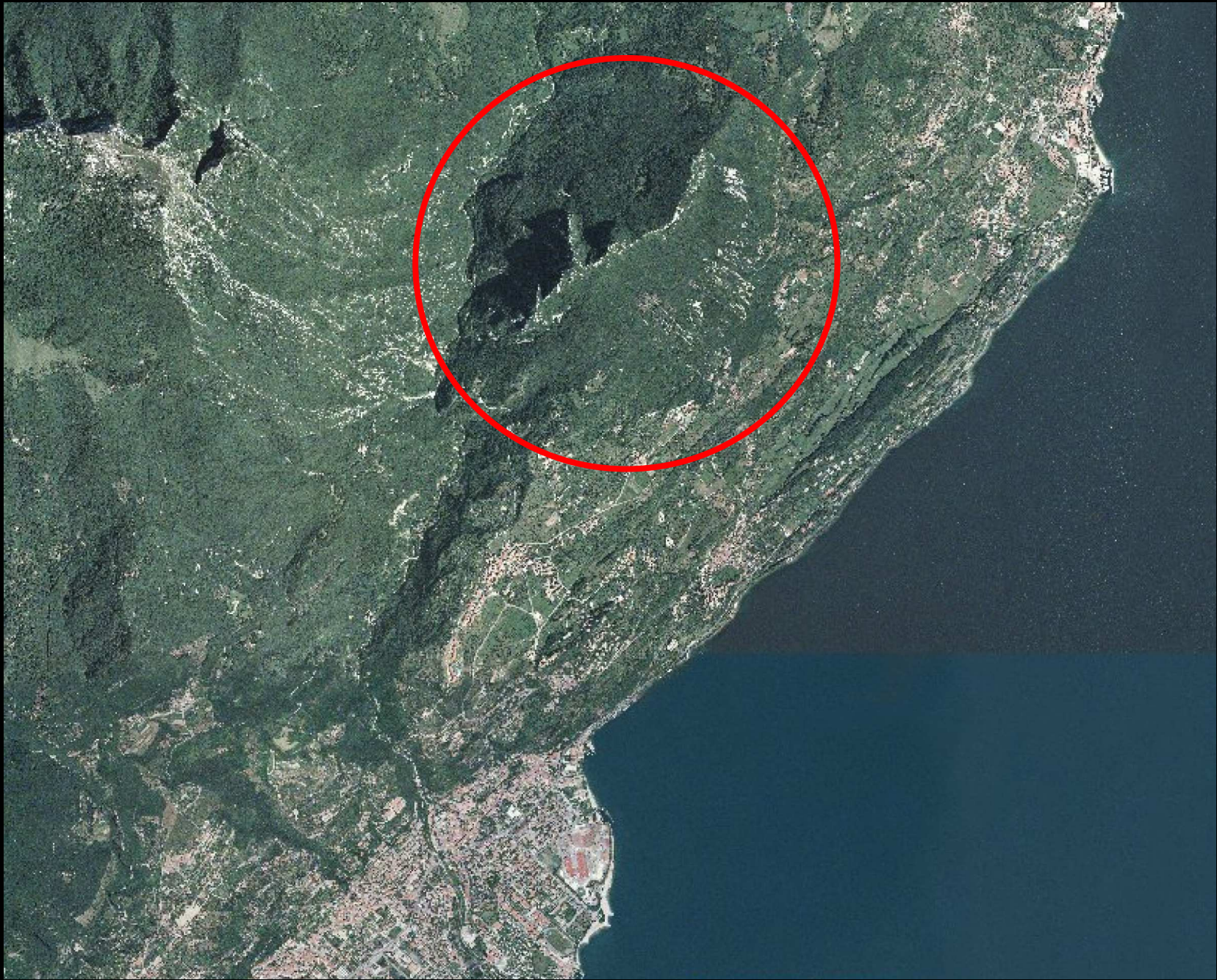
Maderno, Palazzo Benamati - 14.03.2011



*L'Ecomuseo si racconta*

# La fortificazione altomedievale di Monte Castello di Gaino

Alberto Crosato







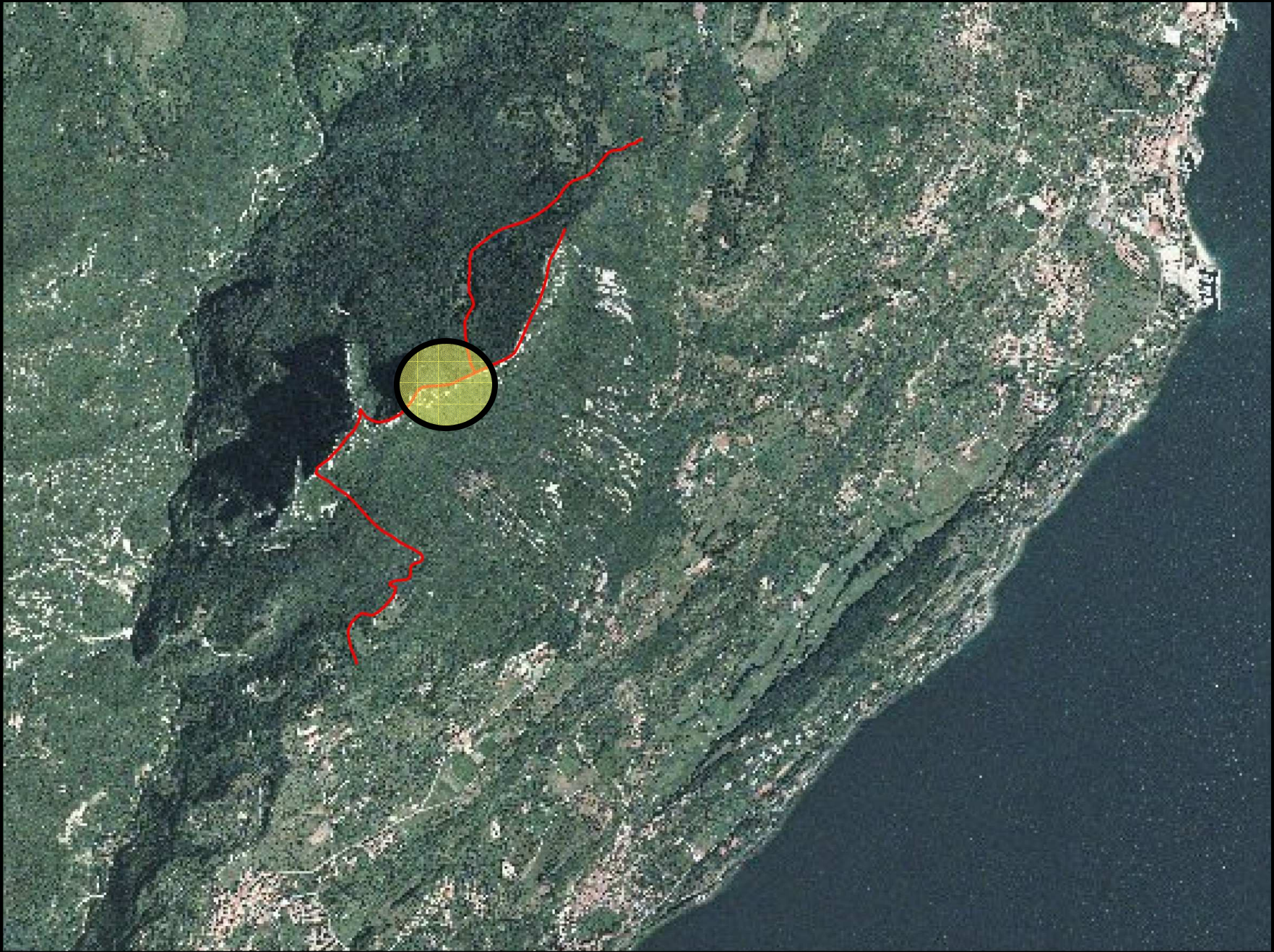


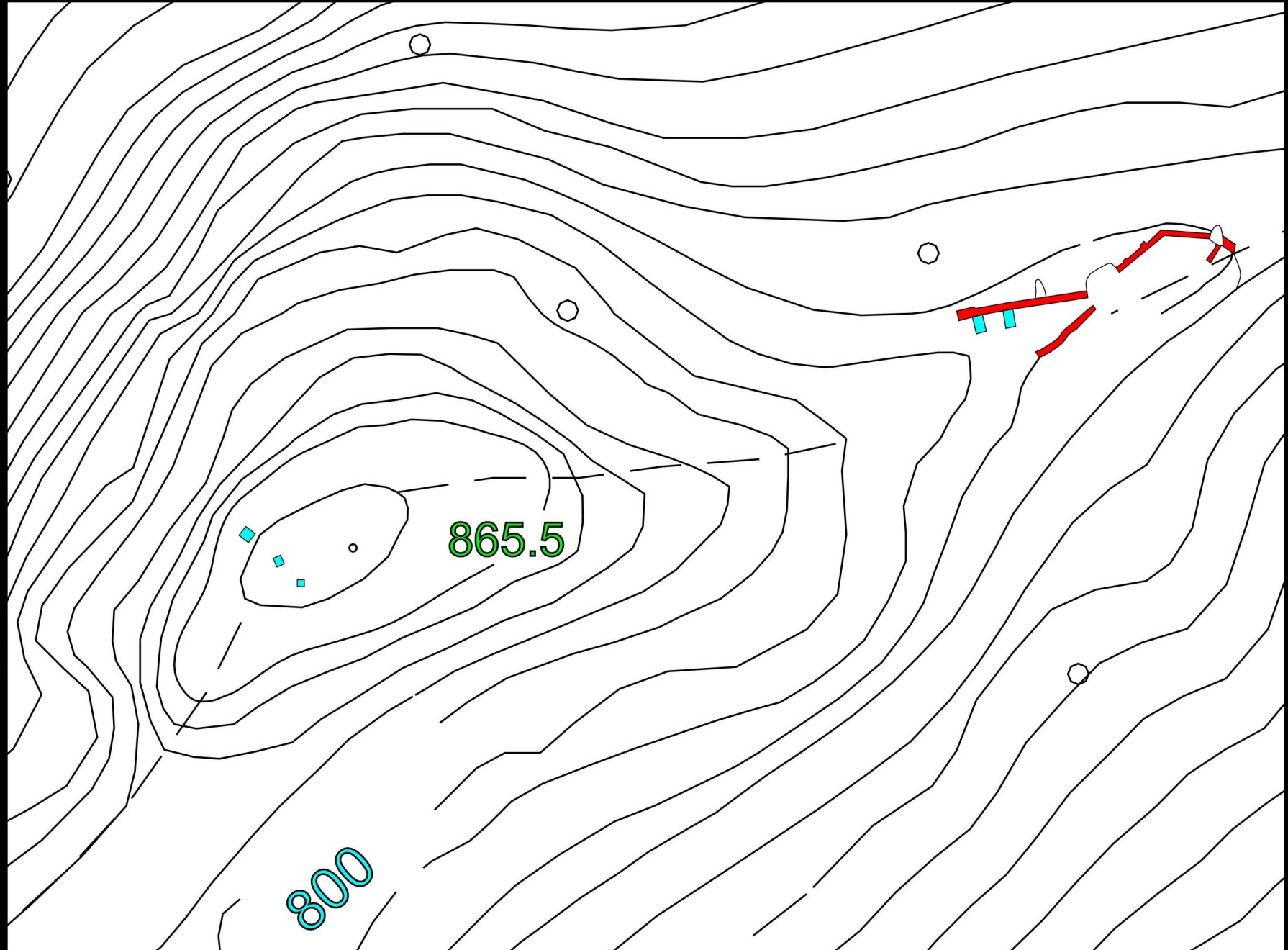






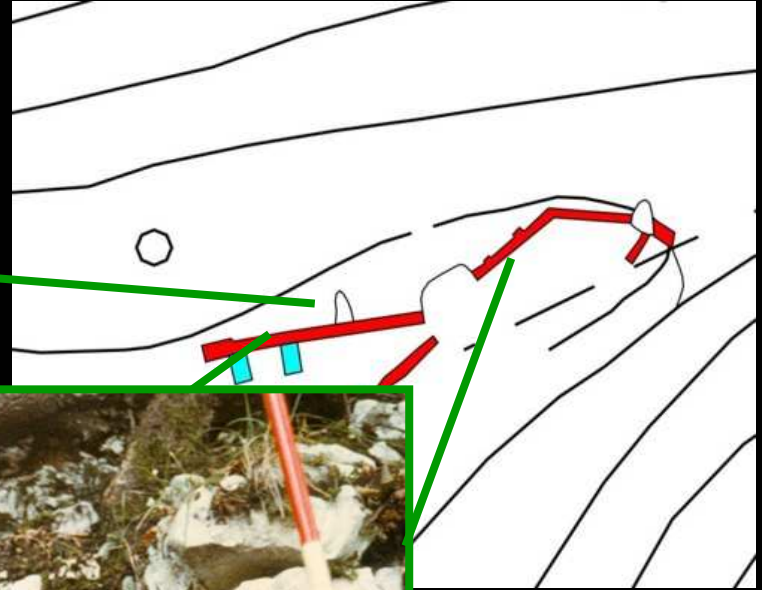


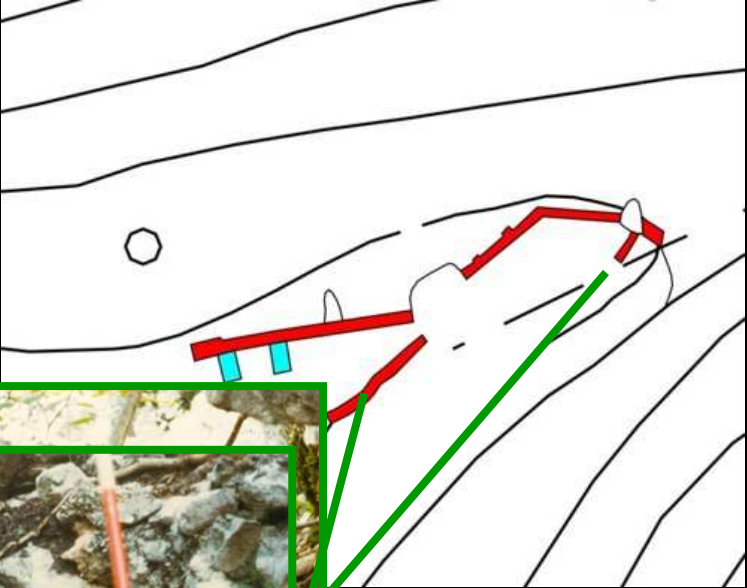


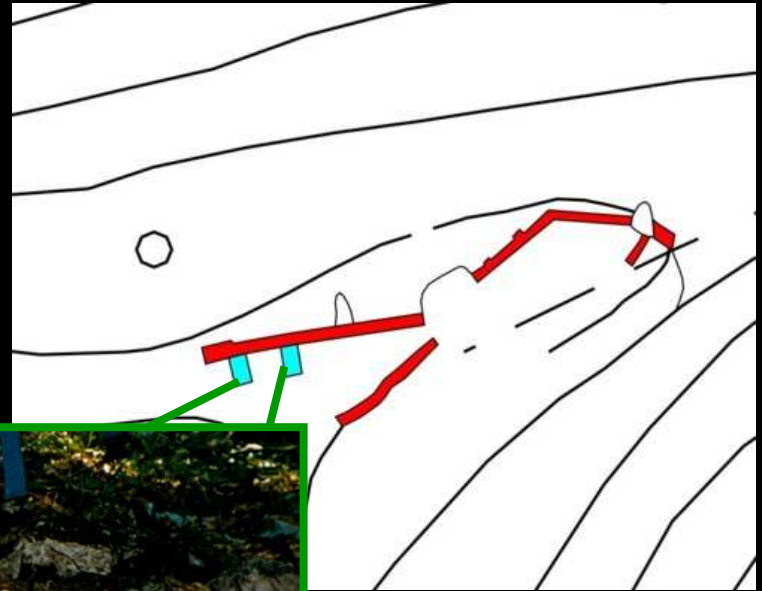


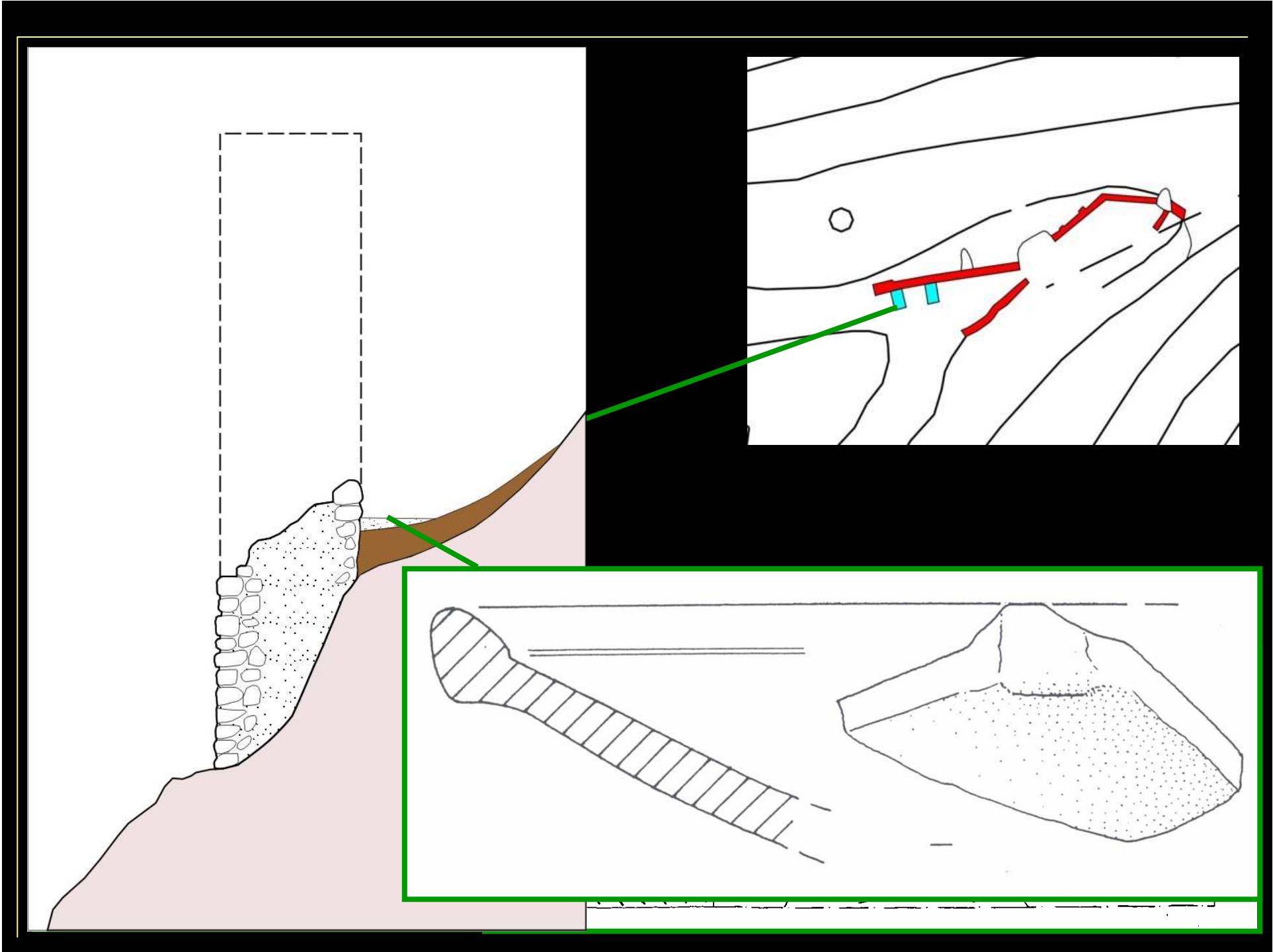
865.5

800

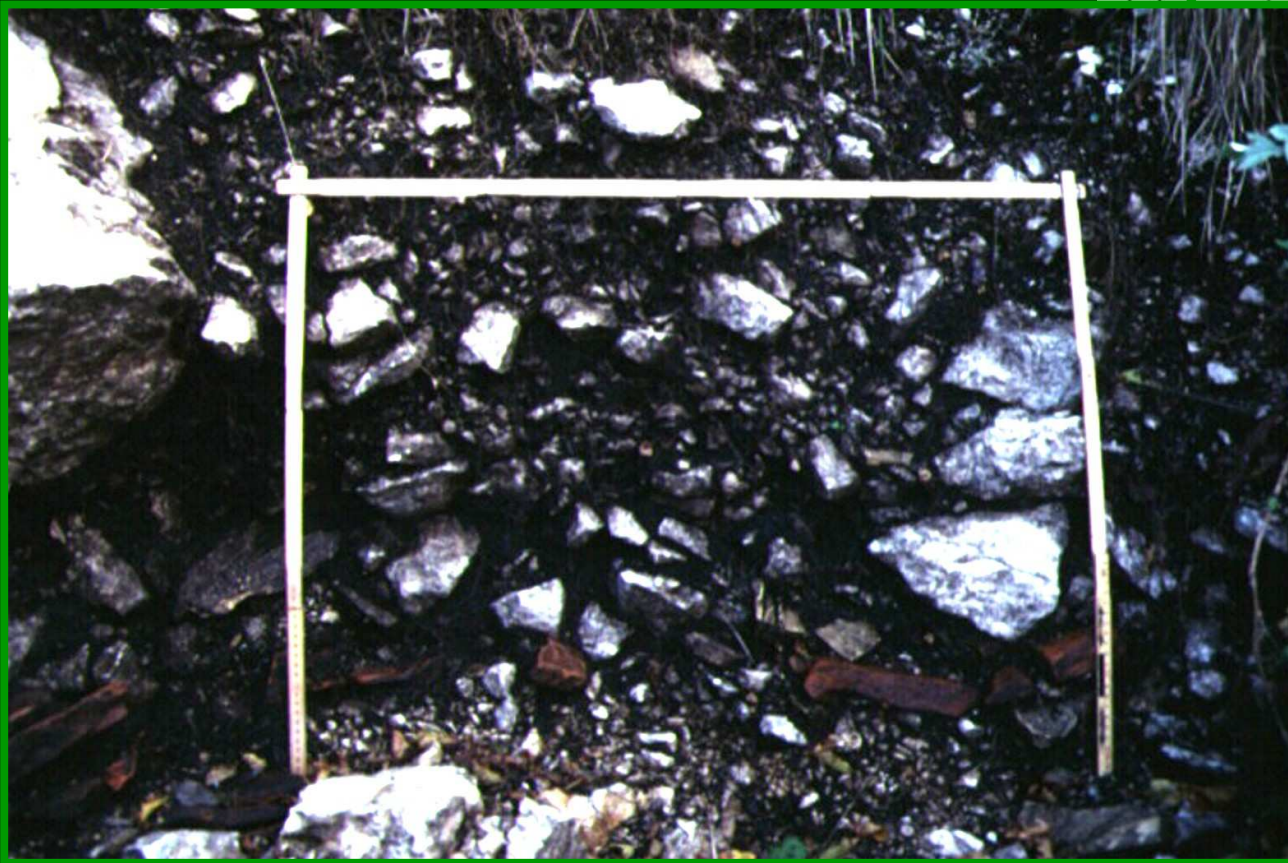
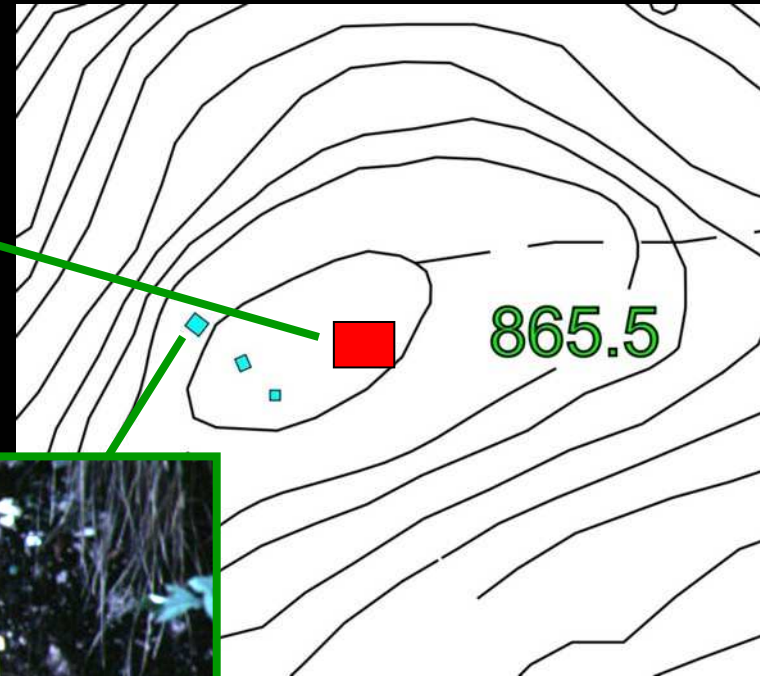


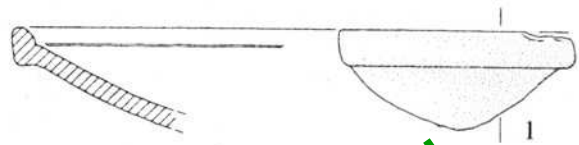






# Roccia tagliata











# Origini della fortificazione di Monte Castello

Periodo: 525 - 590 c.ca

## Ipotesi sulla sua funzione

1. Fortificazione bizantina edificata nel corso della guerra greco-gotica

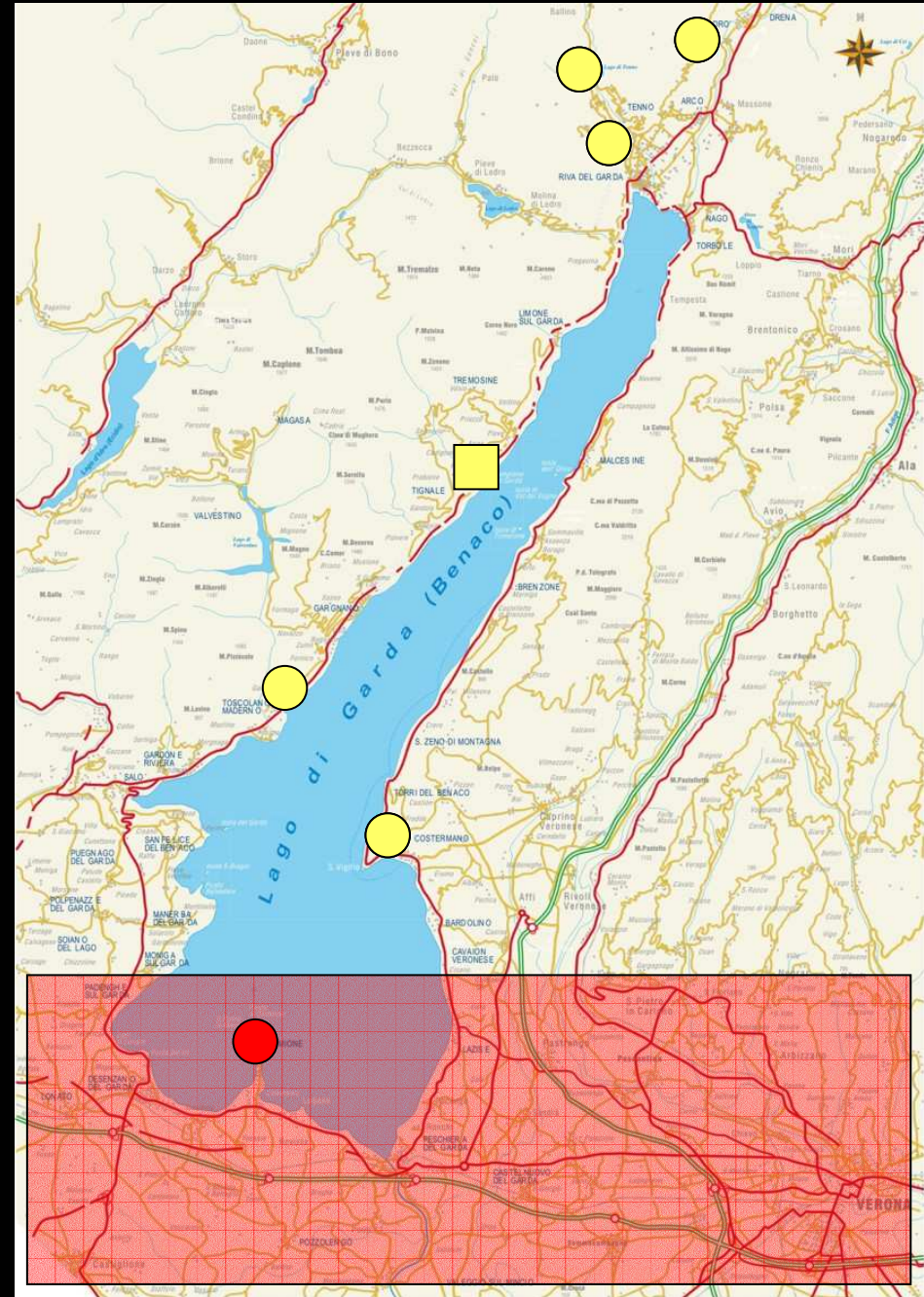
2. Fortificazione bizantina edificata all'arrivo dei longobardi

**Castelli di origine gota**

**Area conquistata dai longobardi nel 569**

**Fortificazioni ancora bizantine nel 569**

**Eremo del vescovo Erculiano**





**Legenda:**

-  Fortificazione tardo-antica altomedievale
-  Ritrovamenti di sepolture altomedievali

0 500 m



